

# 51 罩壳压紧式普通压力表

P-050.205

## 51 Push in type General Service Pressure Gauge

### 产品特性：

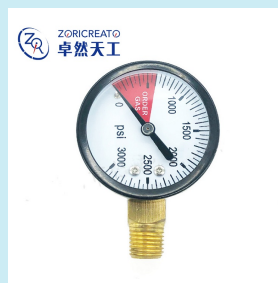
径向结构、轴向结构可选  
压紧式罩壳设计  
铜内机、  
反装铜合金机芯  
喷黑塑铁壳，轴向喷白塑铁壳可选  
M14(M14X1,5)螺纹连接  
2.5% 精度等级  
测量范围：0.1MPa ~ 6MPa

仪表型号标示 Type code :  
P-050. AO. 205 (P-50 A17)

仪表型号标示 Type code :  
P-050. ZO. 205 (P-50 A18)

### CHARACTERISTICS

Bottom mounting, Back clamp  
mounting available  
Push in type  
Brass internals  
Left-handed machine copper  
alloy internals  
Iron case with black plastic painted,  
white available  
M14(M14X1,5) connection  
Accuracy 2.5%  
Range: 0.1MPa ~ 6MPa



### 几何尺寸 DIMENSIONS

单位 Unit (mm)

